



SEARCH FOR A SUPERHERO

Don't open any
envelopes yet.



signals.fun



riddle.quest



@mysteryleague



**SEARCH FOR A
SUPERHERO**

The Mystery League



signals.fun



riddle.quest



[@mysteryleague](https://www.instagram.com/mysteryleague)



AGENT TICKTOCK

CAN HEAR
VIBRATIONS
FROM FAR
AWAY!

KILROY

MASTER
OF SHAM
IRONY!

MISS BITSY

HAS A
SIDEKICK
ONE-EIGHTH
HER SIZE!

Alter ego

(first and last name)

Clark Kent

**Home
constellation**

Corvus

Weakness

Lungs

4 main envelopes

Each reveals a message

Each message is an
instruction

Call over a supervisor when
you're ready to do what it says

Final envelope

Determines the winner

3 tips

TALK to each other

LISTEN for quieter voices

READ everything

Stay tuned to these
screens for hints

Questions?

OPEN ENVELOPE 1!

First hints will appear in a few minutes.

PART A

The prices are useful, but not for ordering.

PART A

Sort by superhero name.

Then use the prices to extract a letter from the alphabet.

PART B

The example shows **May Phan**, with the inserted word “or”. Who runs a town? What do you call an abandoned child?

PREVIOUSLY: PART A

Sort by superhero name, and use the prices to extract a letter from the alphabet.

PART B

May Phan's clue yields **MAYOR** & **ORPHAN**. That's why the overlapping word is **OR**.

Runs a town: MAY-OR

An abandoned child: OR-PHAN

PART B: SPELLING

The new words may have a different spellings than the word that fills in the blanks.

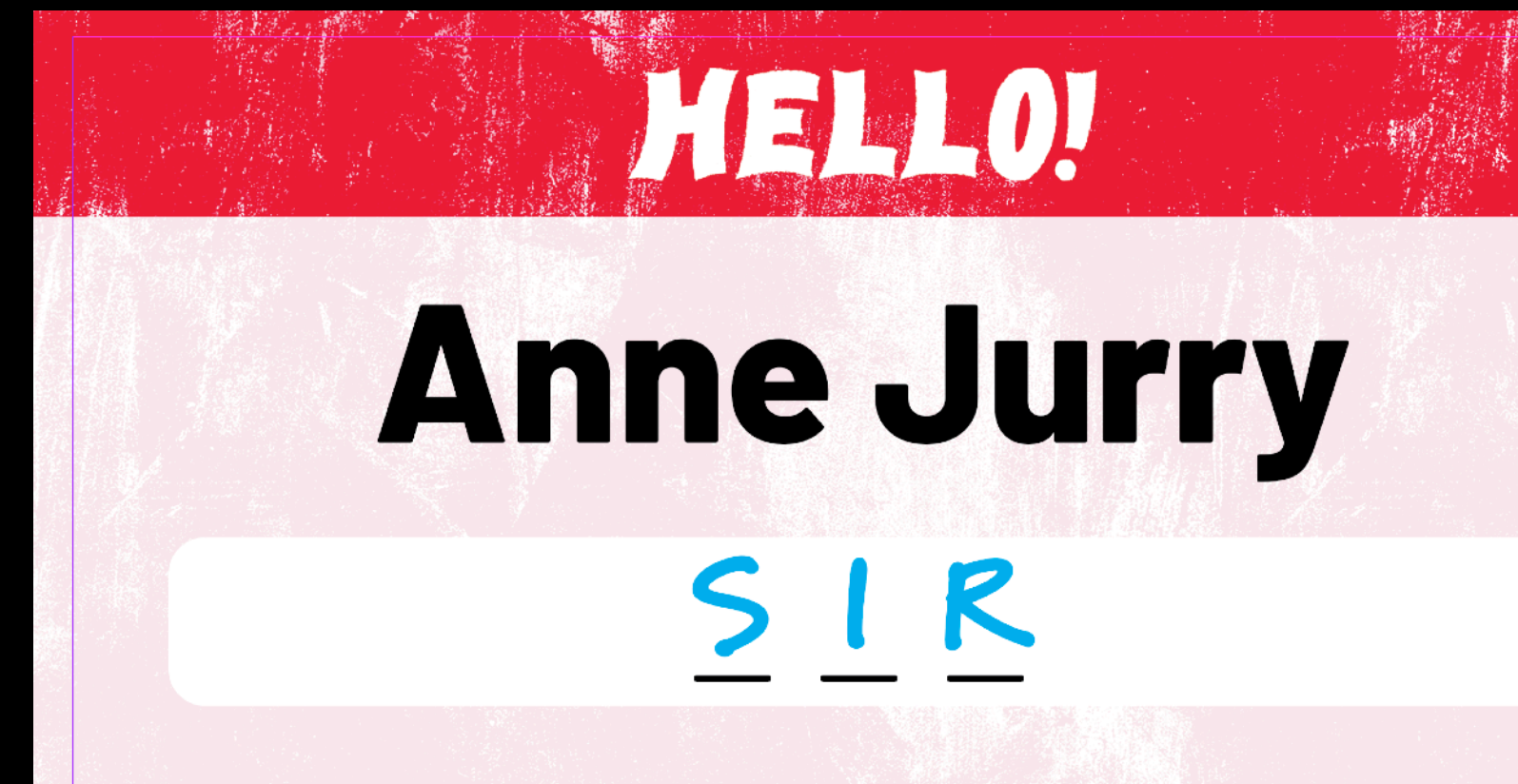
Anne Jurry → AN-SWER & SUR-GERY → SIR

PREVIOUSLY

May Phan's clue yields MAYOR & ORPHAN. The overlapping word is OR.

PART B

Match the new words with the comics publishers. 🙌



PREVIOUSLY

The new words may have a different spellings than the word that fills in the blanks.

Anne Jurry → AN-SWER & SUR-GERY → SIR

PART B: DOTS

Can Tonne has **2** dots (••), so extract the **2nd** letter of the Super's name:

2 dots → 2nd letter of AGENT TICKTOCK → **G**

G is first letter of your message. Write it down in the first blank.

PREVIOUSLY

The new words may have a different spellings than the word in the blanks.

Anne Jurry → AN-SWER & SUR-GERY → **SIR**

Match the new words with the comics publishers.

SIR → **Knight's Title Comics** (Early Byrd)

PART B

Ban "**JOE**" Cur → Banjo / Joker

Bax "**PIN**" Uckle → Backspin / Pinnacle

Can "**NEW**" Tonne → Canoe / Newton

Phil "**UP**" Perkut → Fill-up / Uppercut

Thor "**KNEE**" Wrest → Thorny / Nearest

Vinda "**LOO**" Minos → Vindaloo / Luminous

Warf "**AIR**" Rose → Warfare / Arrows

Don't forget
to write an
alter ego
name (e.g.
Can Tonne)
on the back
of each
superhero
card!

PART C

Look at all parts of the covers. Walk around the table and view cards from another angle. **You won't need to guess.**

PREVIOUSLY: PART B

Can "**NEW**" Tonne → Canoe / Newton

2 dots (••) → G from **AGENT** TICKTOCK

Write G in the first blank (since **AGENT** TICKTOCK appears first alphabetically)

Don't forget to write an alter ego name (e.g. **Can Tonne**) on the back of each superhero card!

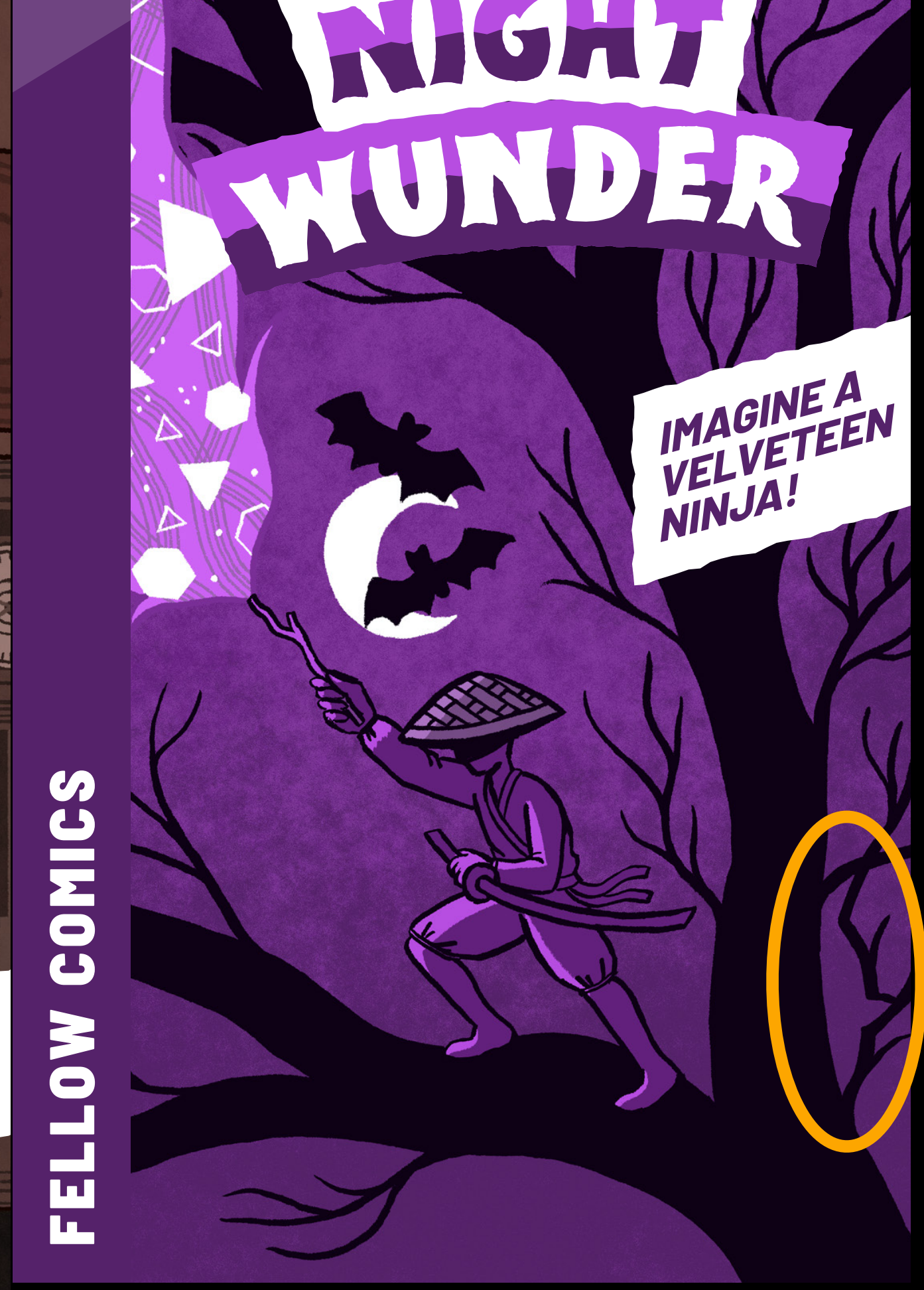
PART C

Look at negative spaces.
Walk around the table and
view covers from another
angle. **You won't need to
guess.** You'll know when
you have a correct match.
You need to *match shapes*.



PART C

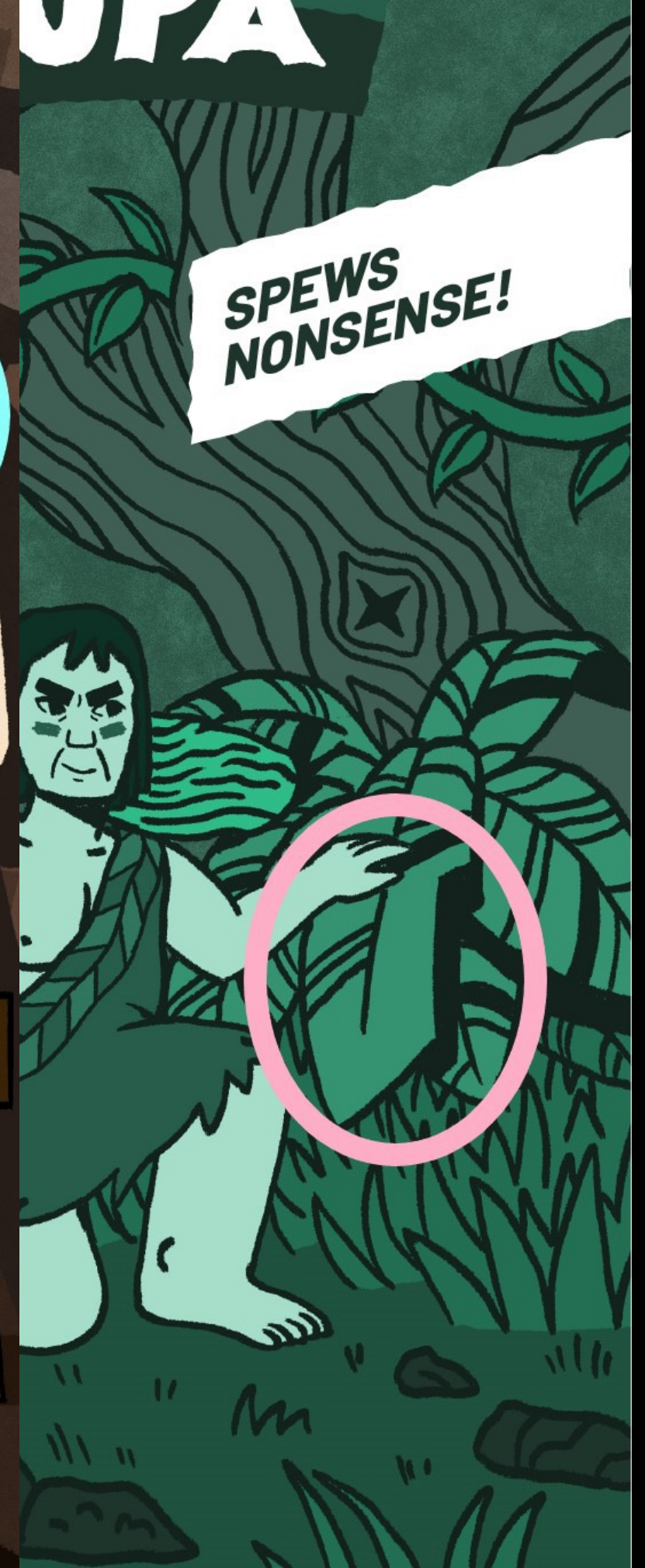
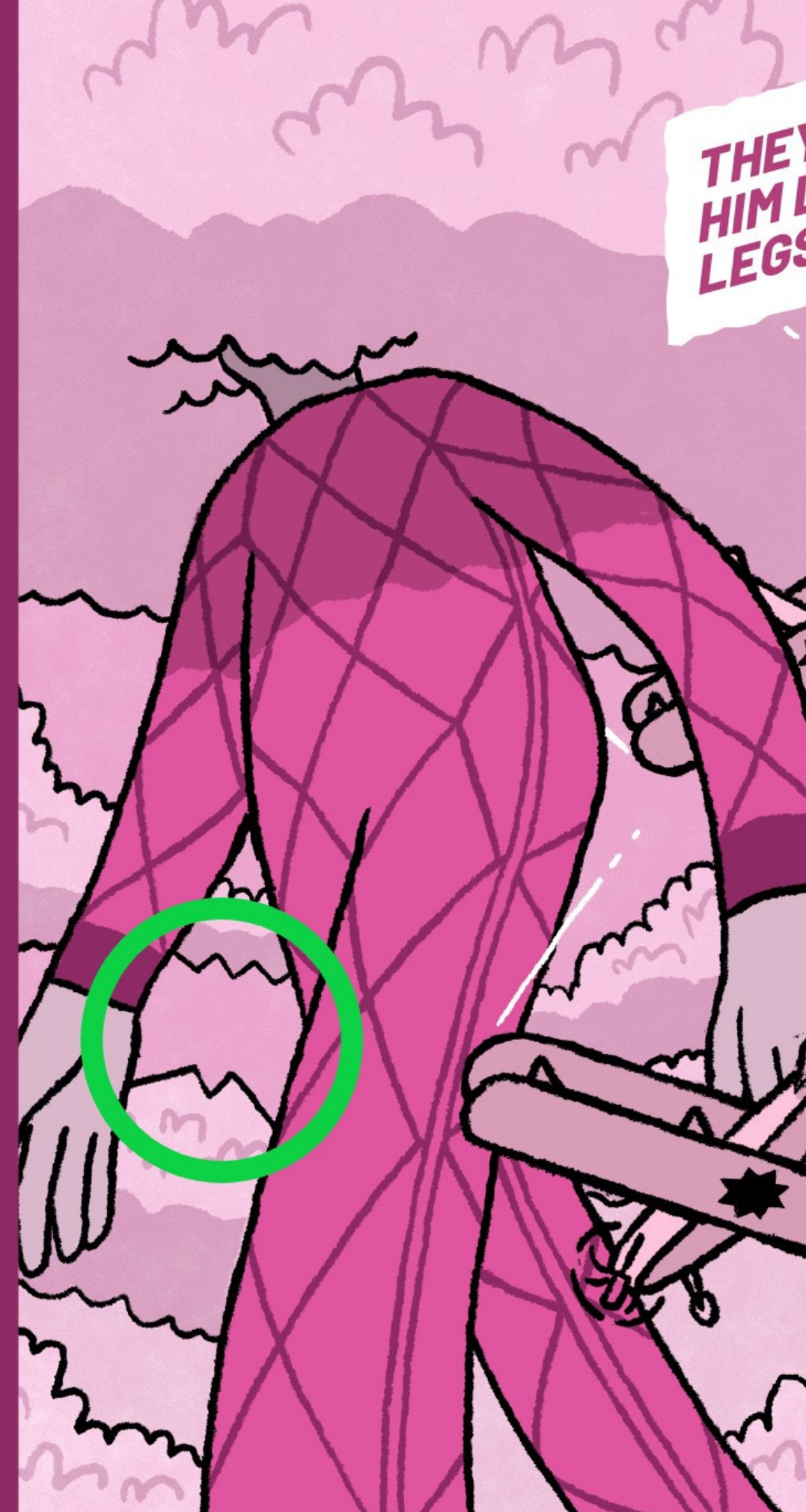
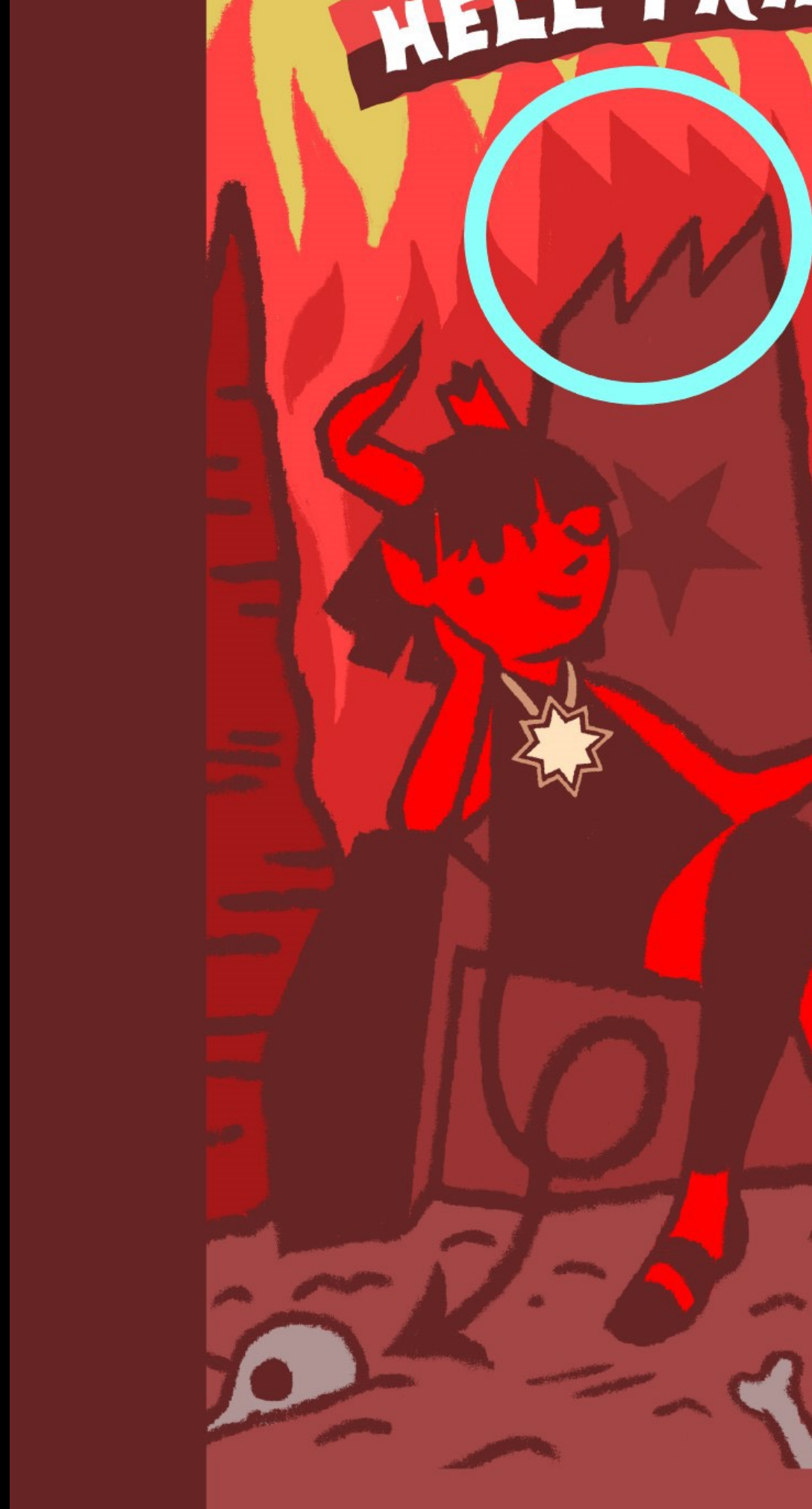




PART C: INTERPRETING MESSAGE

Look for two familiar shapes in each cover.

Don't forget to write a constellation name (e.g. **Osmic**) on the back of each superhero card!

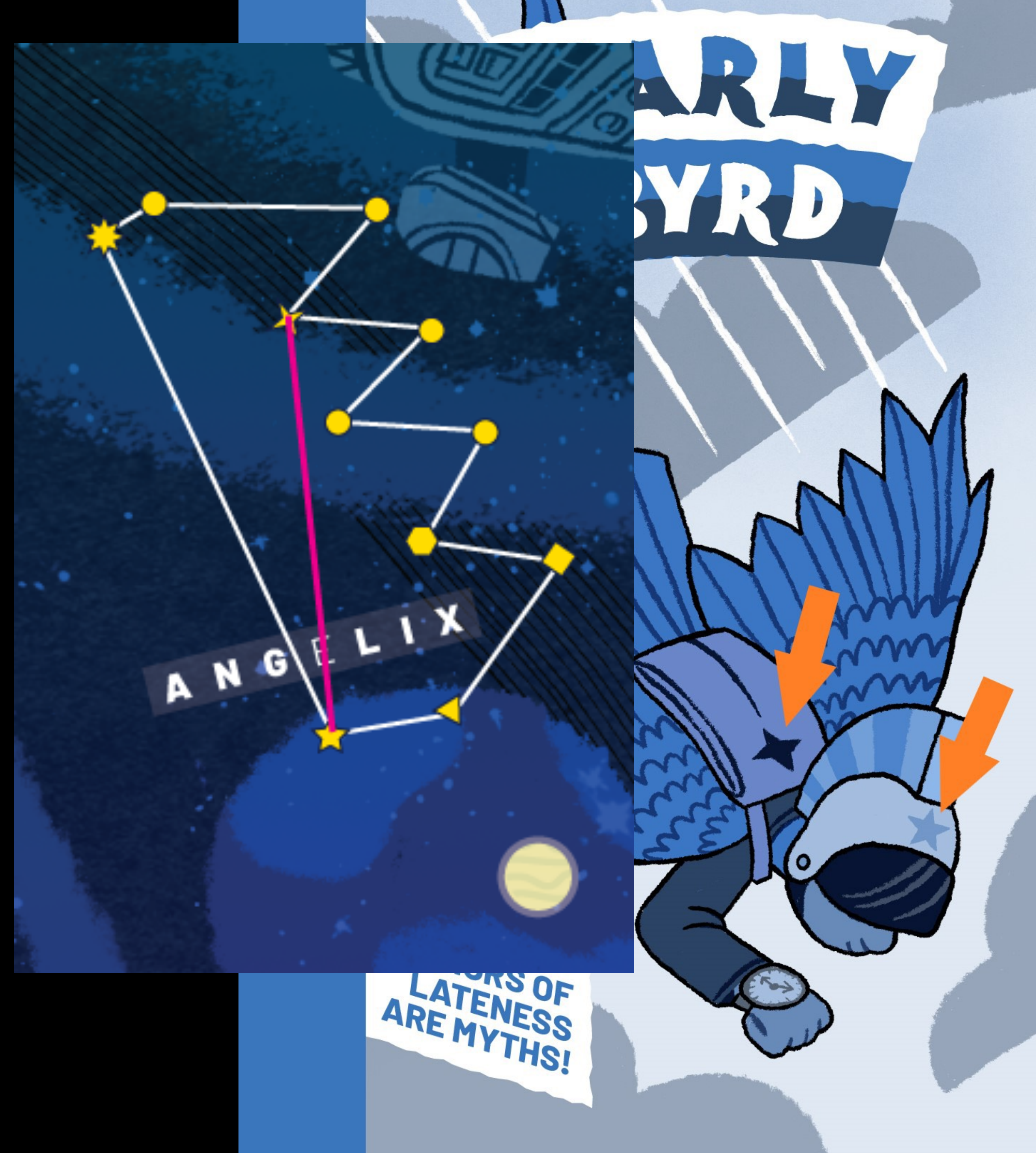


Look for two familiar shapes in each cover.
Then turn to the constellation and follow
the instruction.

Don't forget to write a constellation
name (e.g. **Osmic**) on the back of
each superhero card!

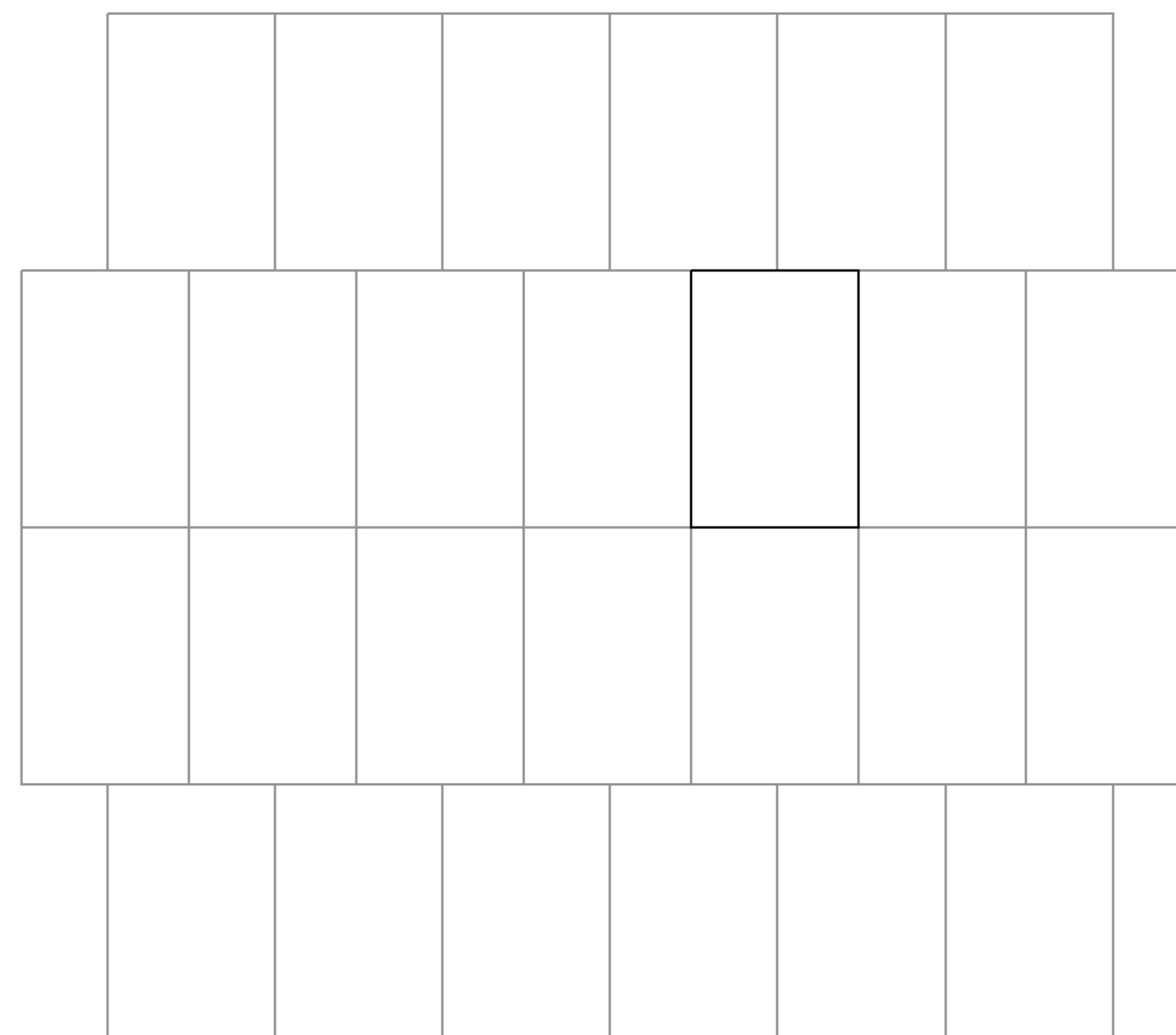
PART C: MESSAGE

Look for two star shapes somewhere on each cover. On the matching constellation, draw a line between those two shapes. Once that's all done, consider all the constellations' backgrounds.

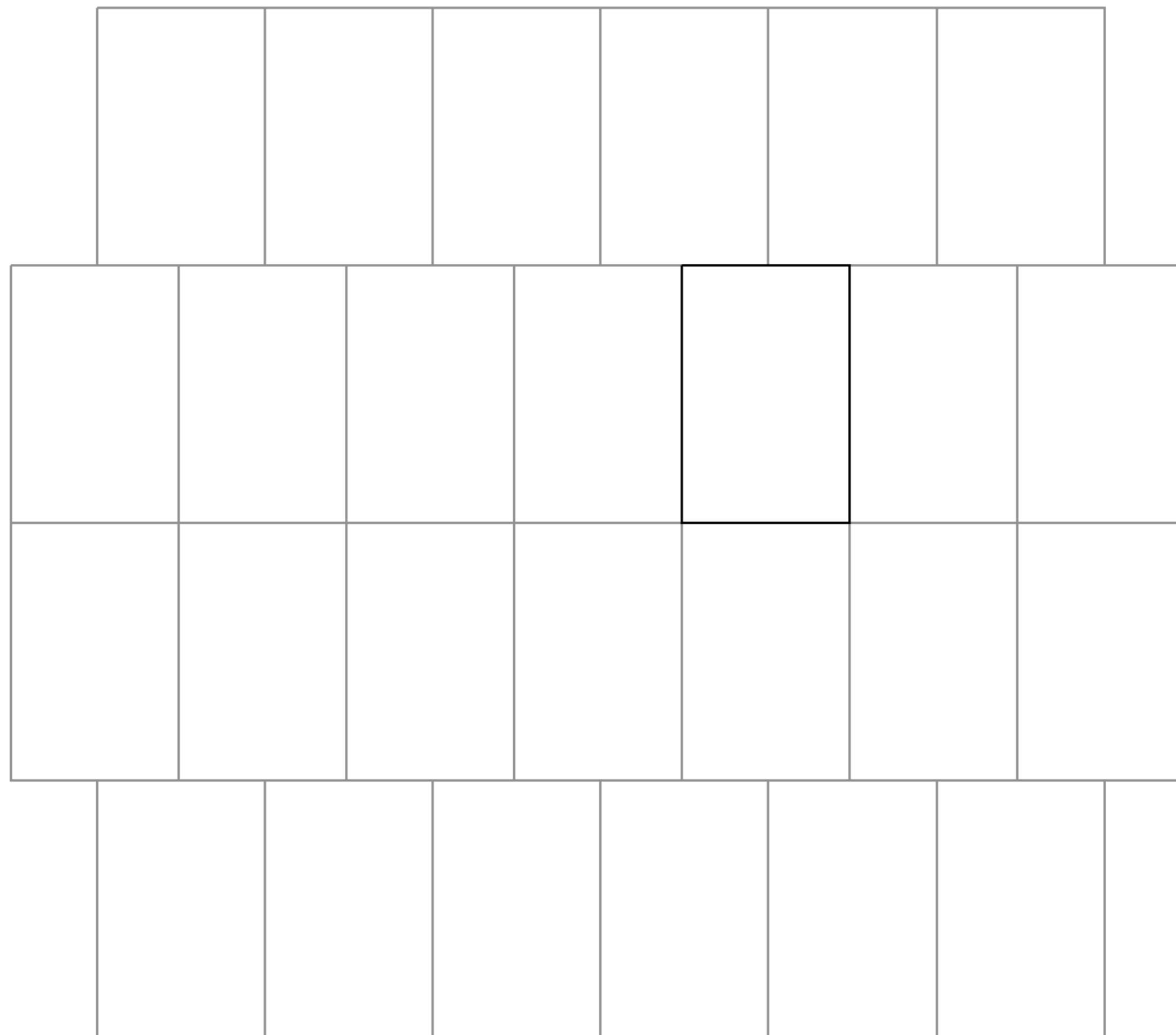




Then arrange cards in this pattern,
using backgrounds:



Arrange cards in this pattern,
using backgrounds as jigsaw:



PART D

Some of these
taglines are weirdly
worded — and
usually the weirdest
word has the
hidden body part.

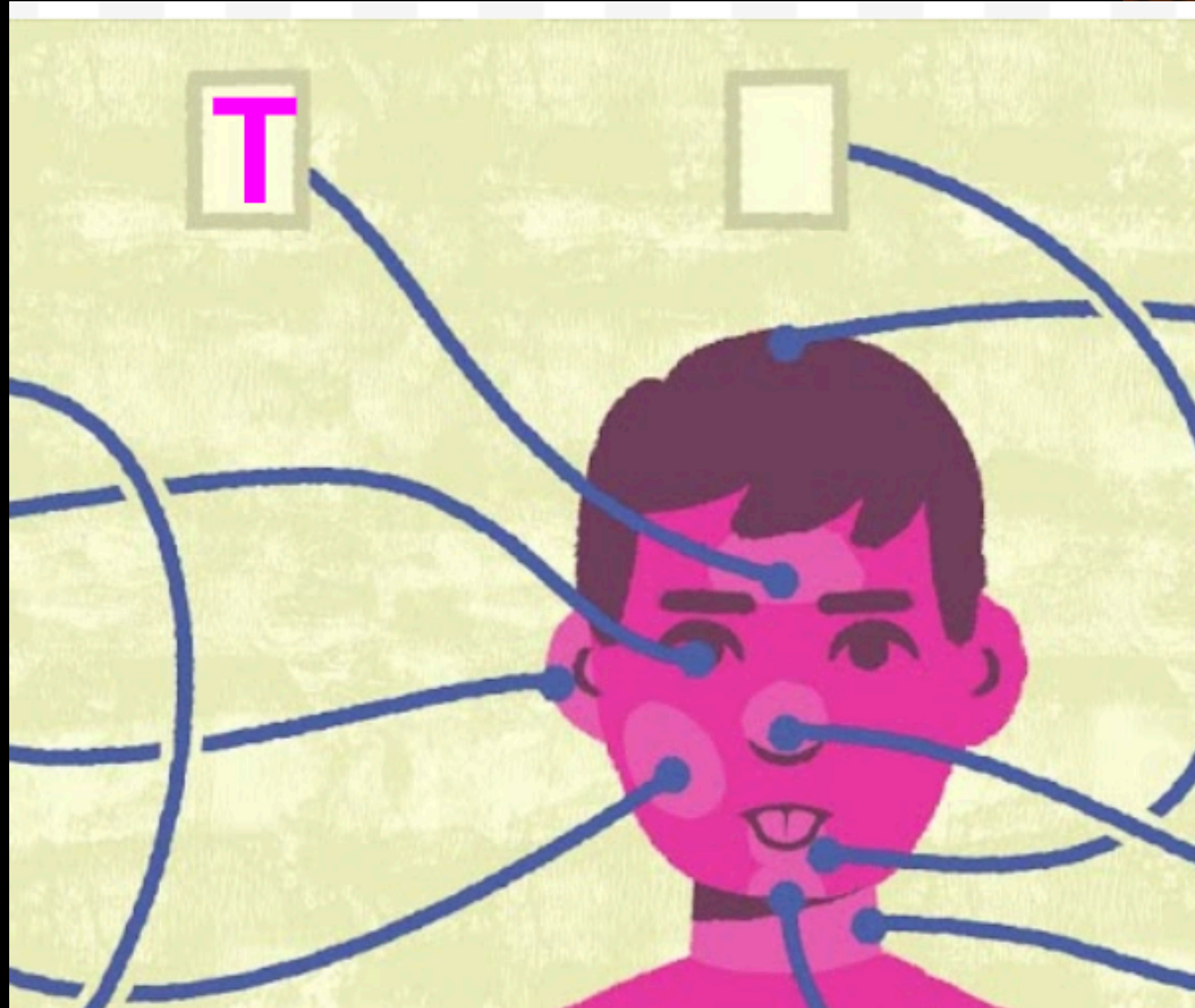
PART D

Some of these taglines are weirdly worded — and usually the weirdest word has the hidden body part.

For most you'll have to read across the spaces.



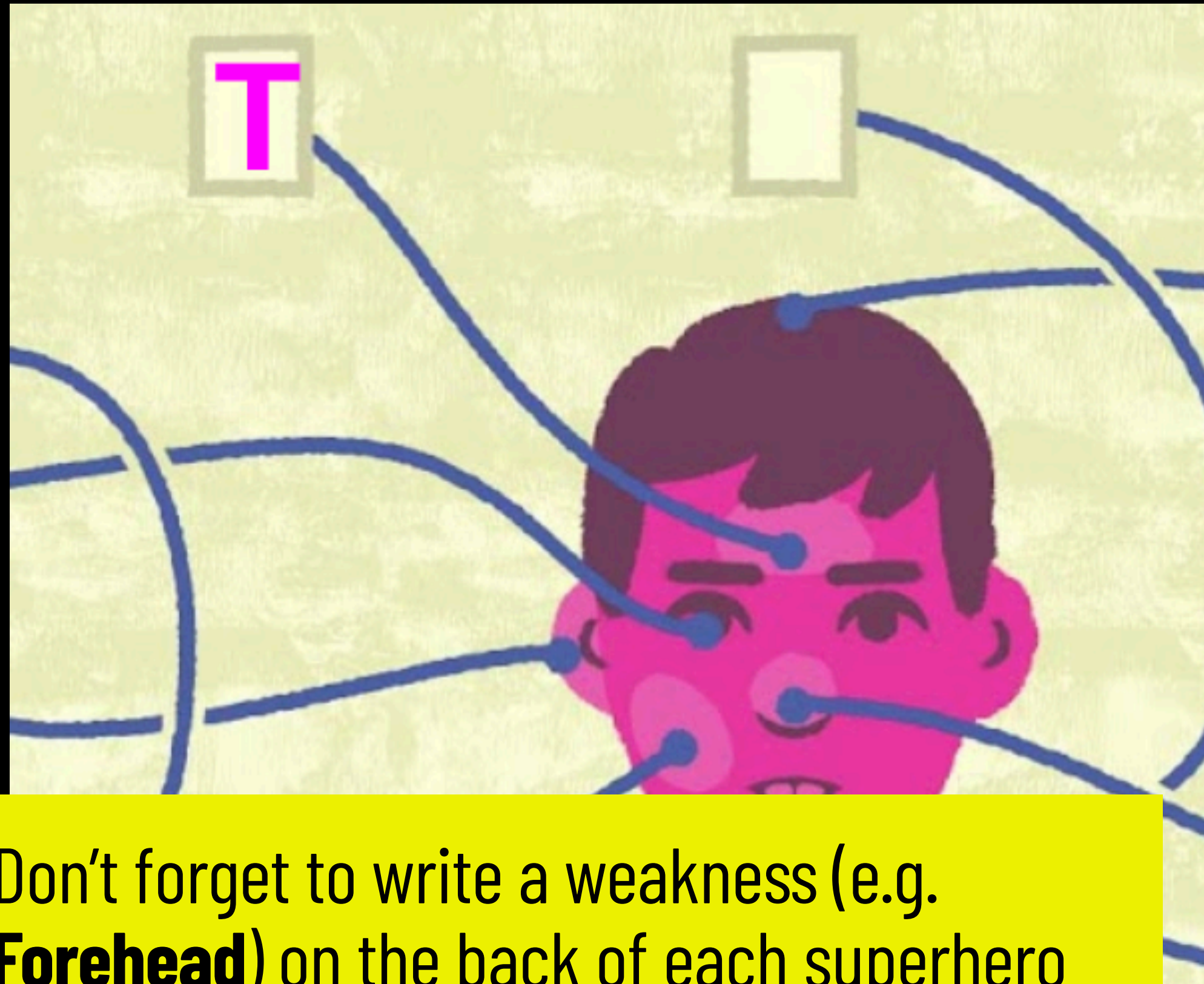
FOR(T)EHEAD means
put T in box connected
to the FOREHEAD.



Don't forget to write a weakness (e.g. **Forehead**)
on the back of each superhero card!

X Marker: ...FOR(T)E

HEAD... → Put T in box
connected to the forehead.



Don't forget to write a weakness (e.g. **Forehead**) on the back of each superhero card!

The Mystery League

Thanks for playing!



signals.fun



riddle.quet



[@mysteryleague](https://www.instagram.com/mysteryleague)